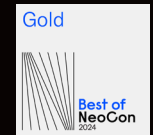




TOCCO COLLECTION



MADE
IN ITALY

Designed by RainlightSTUDIO with Kay Sargent,
Cognitive and Sensory Wellbeing Design Consultant





How can we design more inclusive workplace?

All aspects of the space, such as color, lighting, materiality, texture, elements in the field of view and sensory stimuli need to be designed with purpose and intent.

pba collaborated with RainlightSTUDIO and Kay Sargent to deepen our understanding of sensory stimulation in the built environment and how this can impact individuals occupying the space, specifically neurodiverse individuals. Our goal is to offer designers a complete range of door hardware, levers and pulls, giving them the option to choose color and texture to design the most inclusive space for all users.

“To allow all employees to thrive, office designs need to remain fluid and adaptable. Employers can improve employee wellness and productivity by offering a wide range of choices, allowing people to continually select the best space for their individual needs.” Kay Sargent | Cognitive and Sensory Wellbeing Design Consultant.

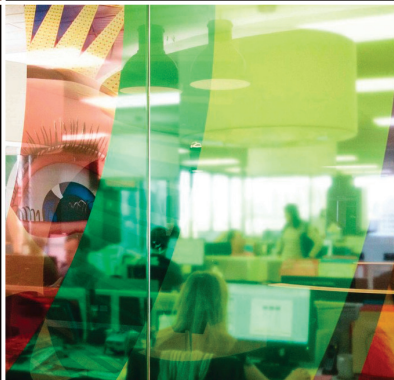
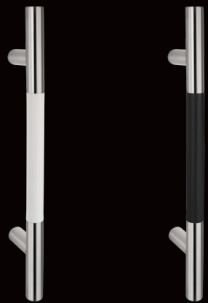
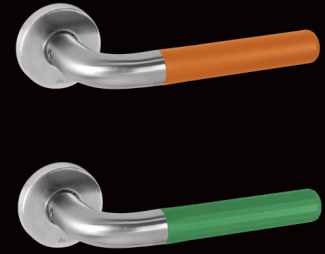
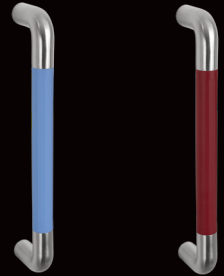
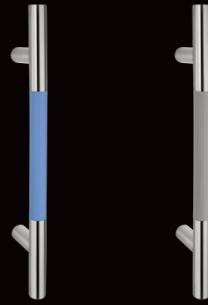
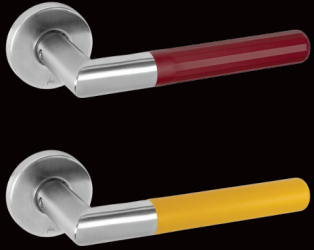


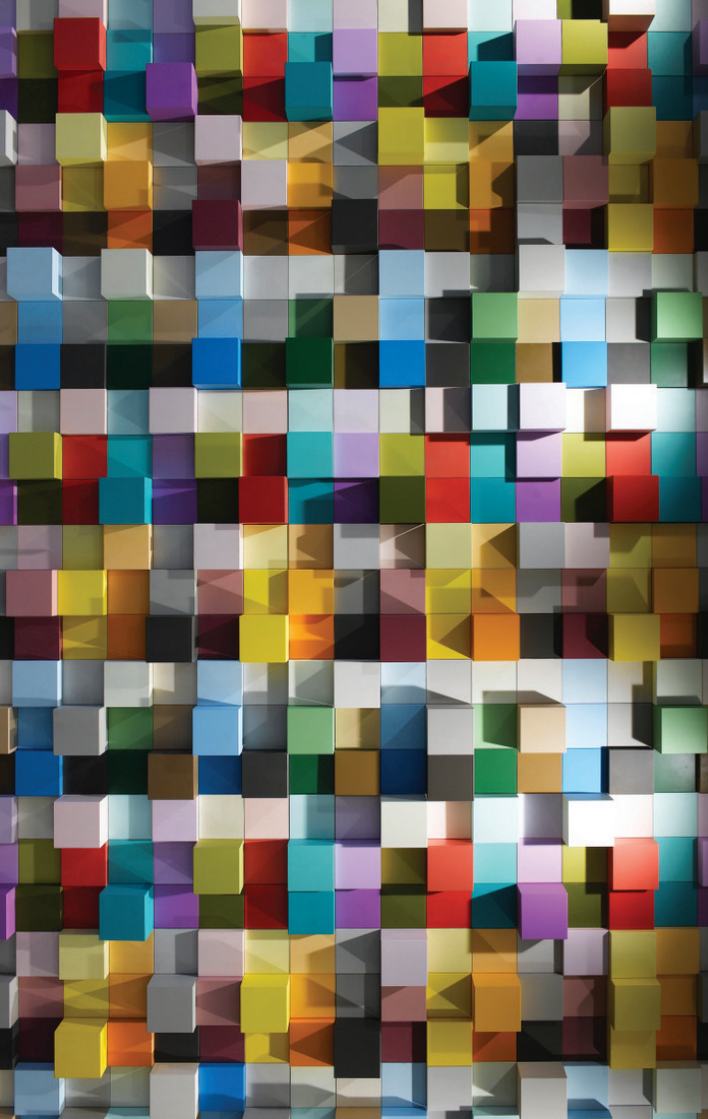
TOCCO Collection is a capsule hardware collection of levers and pulls that are sustainable, interchangeable and sensory sensitive.

The TOCCO line is the perfect affordance, use of cues that aid the user in how to interact with something, for all users.

The TOCCO Collection doesn't intend to propose new design or new fixing methods: we have chosen common designs and standard fixing systems, because the choice of TOCCO has to be an option also in renewal projects, without the need to renew the doors or other pre-existing components. Inclusive choices must also be sustainable; the person and then the environment are at the centre.

“Design is an orchestration of all the senses to create a sense of belonging in the moment, and touch is our true connection with reality. The door handle represents the first touch a person experiences with a building, or a room. We look to a more human approach that defies expectation, evoking a welcome sense of wonder.” Yorgo Lykouria | Creative Principal RainlightSTUDIO.





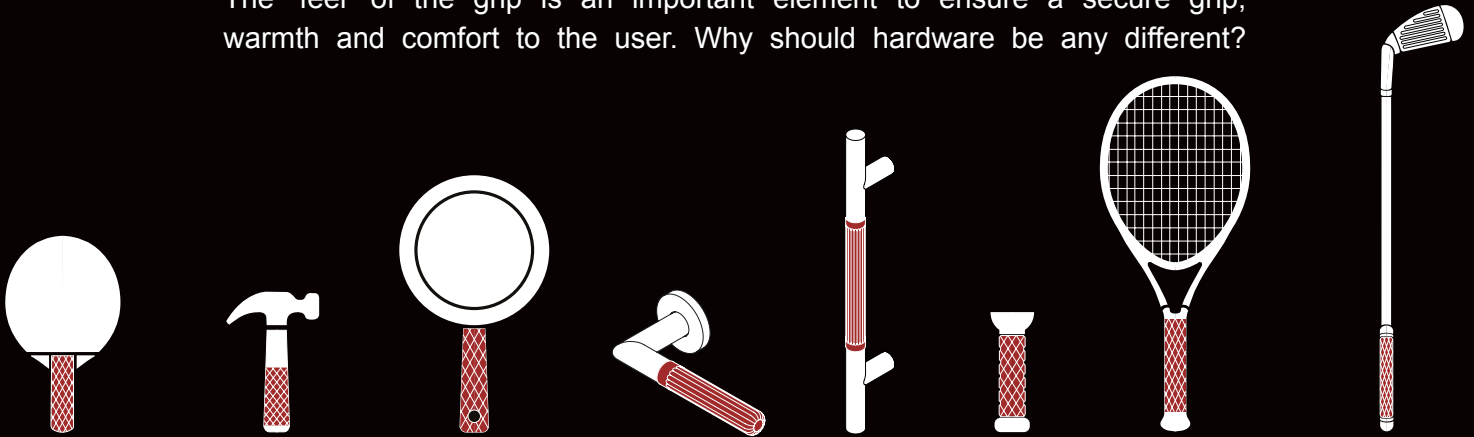
TOCCO Collection was designed specifically to offer designers the possibility to choose the color (visual) and the texture (tactile) of the handles (levers and pulls) to better address the preferences and needs of different users.

TOCCO Collection offers an infinite range of colors and two different handle grips - smooth and textured - to meet the tactile preference of all users.


The grip of the TOCCO Collection is made of ECONYL® nylon, a soft material with a temperature similar to that of the environment. Nylon is pleasant and not hard and cold to the touch. The feeling you have in the grip is an important element that transfers comfort and safety to the user.

“All we know about designing for inclusion should be applied to every element within the build environment...include the hardware. No detail is too small, as they all impact the experience we have and add to the overall solution.”
Kay Sargent | Cognitive and Sensory Wellbeing Design Consultant.

Think about sporting equipment, such as a tennis racket or a golf club. The 'feel' of the grip is an important element to ensure a secure grip, warmth and comfort to the user. Why should hardware be any different?

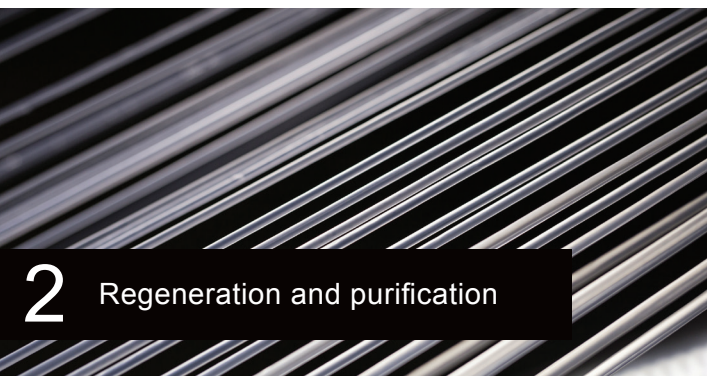


ECONYL® regenerated nylon




1 Gathering of waste materials

The future is circular: from waste, ECONYL® nylon is infinitely recyclable.



2 Regeneration and purification

The TOCCO Collection grip is made from ECONYL®, 100% regenerated nylon from waste such as fishing nets, old carpets destined for landfills, plastic components and fabric scraps from mills. As well as being a solution on waste, ECONYL® regenerated nylon is also better when it comes to climate change. It reduces the global warming impact of nylon by up to 90% compared with the material from oil.



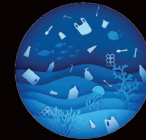
3 Re-transformed into polymers

TOCCO Collection project represents a commitment to sustainability and truly responsible practices. We chose to use ECONYL® regenerated nylon into our products as we support the mission of giving waste material a new life. Everything we do from now on must benefit the planet.

T actile



O nly Regenerated Nylon



C olorful



C ognitive Wellbeing



O ne-World





Inclusiveness is for everyone, it does not identify a specific skill, it does not seek solutions that flatten needs in a vision of “common necessity”, on the contrary it values the beauty, the variety and the uniqueness of people. Only universal values can lay the foundation of such an ambitious building: inclusiveness, beauty for all, responsibility for the choices made on what, with whom and how, and sustainability. Because we cannot avoid to be sustainable if we truly believe in the “for all” which is the reason why the TOCCO Collection combines everyone and everything.

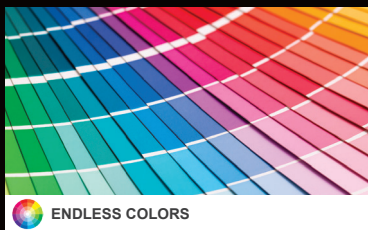
“We need to create environments that have an ecosystem of options and choices so people who are neurodiverse can decide the right setting for them at any given time”
Kay Sargent, Cognitive and Sensory Wellbeing Design Consultant.

THE COLLECTION

LEED® EPD®
THE INTERNATIONAL EPD® SYSTEM

ECD PLATFORM
EPD
VERIFIED

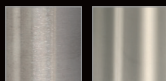
TOCCO COLLECTION



FINISHES .XX

Lever

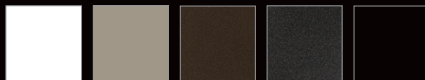
Stainless Steel



Satin
.44

Bright
.43

Stainless Steel Powder Coated Lever



White
.31


Champagne
.38

Bronze
.39

Grey
.32

Black
.40



 SMOOTH



 TEXTURED

Grip

ECONYL®
REGENERATED NYLON



Black

Bronze

Grey

Red



On request
endless colors

Available all RAL colors (RAL is a color matching system which defines colors for paint - see link). Minimum quantity requested.

ITEM

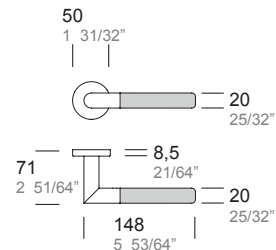
TOC.030.SUT8 .xx



mortise



with return spring



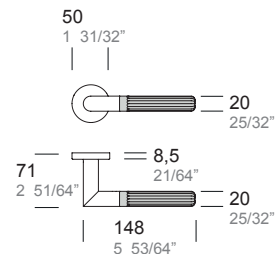
TOC.030.FUT8 .xx



mortise



with return spring



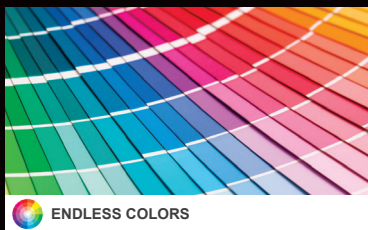
MATERIALS

- Stainless Steel Lever
- ECONYL® Regenerated Nylon Grip

LEED® EPD®
THE INTERNATIONAL EPD® SYSTEM

ECO PLATFORM
EPD
VERIFIED

TOCCO COLLECTION



ENDLESS COLORS

FINISHES .XX

Lever

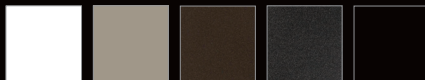
Stainless Steel



Satin
.44

Bright
.43

Stainless Steel Powder Coated Lever



White
.31

Champagne
.38

Bronze
.39

Grey
.32

Black
.40



SMOOTH



TEXTURED

Grip

ECONYL®
REGENERATED NYLON



Black

Bronze

Grey

Red



On request
endless colors

Available all RAL colors (RAL is a color matching system which defines colors for paint - see link). Minimum quantity requested.

ITEM

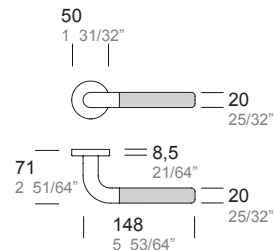
TOC.028.SUT8 .xx



mortise



with return spring



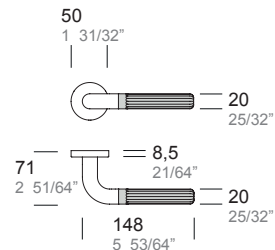
TOC.028.FUT8 .xx



mortise



with return spring

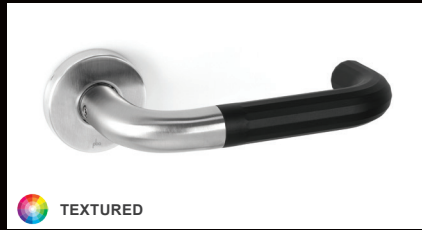


MATERIALS

- Stainless Steel Lever
- ECONYL® Regenerated Nylon Grip



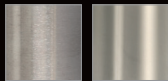
TOCCO COLLECTION



FINISHES .XX

Lever

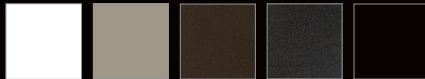
Stainless Steel



Satin
.44

Bright
.43

Stainless Steel Powder Coated Lever



White
.31

Champagne
.38

Bronze
.39

Grey
.32

Black
.40

Grip

ECONYL®
REGENERATED NYLON



Black

Bronze

Grey

Red

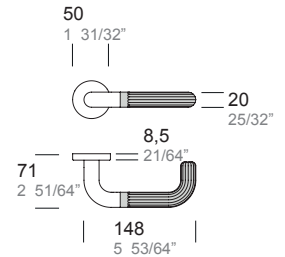
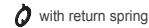


On request
endless colors

Available all RAL colors (RAL is a color matching system which defines colors for paint - see link). Minimum quantity requested.

ITEM

TOC.28B.FUT8 .xx



TITLE 24

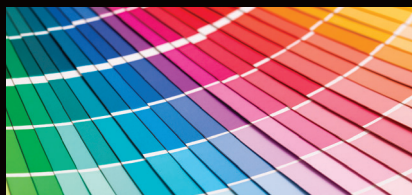
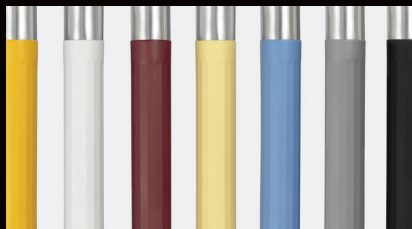
Californian Fire Code Section 12-10-202

MATERIALS

- Stainless Steel Lever
- ECONYL® Regenerated Nylon Grip



TOCCO COLLECTION



 ENDLESS COLORS

FINISHES .XX

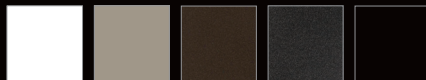
Pull

Stainless Steel



Satin .44 Bright .43

Stainless Steel Powder Coated Pull



White .31 Champagne .38 Bronze .39 Grey .32 Black .40



 TEXTURED

Grip

ECONYL®
REGENERATED NYLON

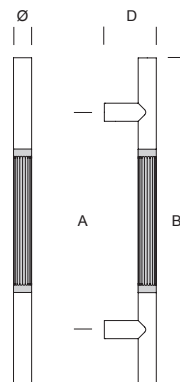


Black Bronze Grey Red



On request
endless colors

Available all RAL colors (RAL is a color matching system which defines colors for paint - see link). Minimum quantity requested.



ITEM	A	B	Ø	D
TOC.286.0F25 .xx	250 mm 9 27/32"	400 mm 15 3/4"	20 mm 25/32"	67 mm 2 5/8"
TOC.243.0F30 .xx	300 mm 11 13/16"	450 mm 17 23/32"	25 mm 63/64"	72 mm 2 53/64"

MATERIALS

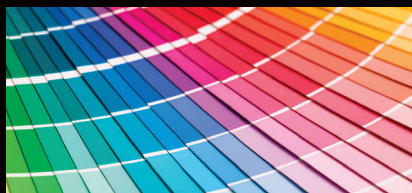
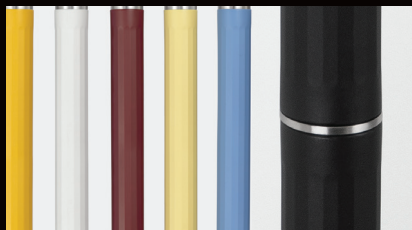
- Stainless Steel Pull
- ECONYL® Regenerated Nylon Grip

COLORS ON REQUEST TO MATCH ANY RAL #
(screws, grub screws and plastic parts not powder coated)
available on request depending on quantities

EDGE COMPONENT:
BLACK FOR DARK COLOUR POWDER
GREY FOR LIGHT COLOUR POWDER AND STAINLESS STEEL



TOCCO COLLECTION



ENDLESS COLORS

FINISHES .XX

Pull

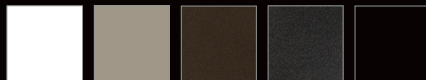
Stainless Steel



Satin
.44

Bright
.43

Stainless Steel Powder Coated Pull



White
.31

Champagne
.38

Bronze
.39

Grey
.32

Black
.40



TEXTURED

Grip

ECONYL®
REGENERATED NYLON



Black

Bronze

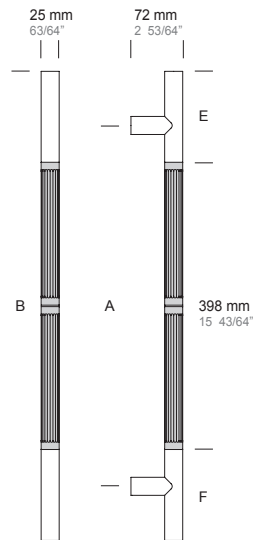
Grey

Red



On request
endless colors

Available all RAL colors (RAL is a color matching system which defines colors for paint - see link). Minimum quantity requested.



ITEM	A	B	E	F
TOC.243.0F50 .xx	500 mm 19 11/16"	650 mm 25 19/32"	126 mm 4 61/64"	126 mm 4 61/64"
TOC.243.999F .xx	custom	custom	custom	custom

B MAX 914,40 mm (36")

A MAX 762 mm (30") - MIN 500 mm (19 11/16")

MATERIALS

- Stainless Steel Pull
- ECONYL® Regenerated Nylon Grip

COLORS ON REQUEST TO MATCH ANY RAL #
(screws, grub screws and plastic parts not powder coated)
available on request depending on quantities

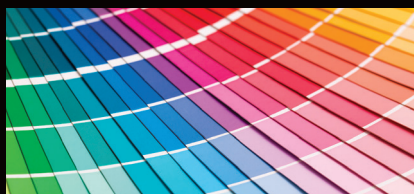
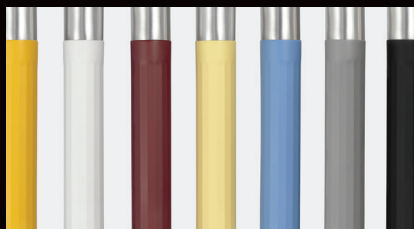
EDGE COMPONENT:
BLACK FOR DARK COLOUR POWDER
GREY FOR LIGHT COLOUR POWDER AND STAINLESS STEEL

LEED®

EPD®
THE INTERNATIONAL EPD® SYSTEM

ECCO PLATFORM
EPD
VERIFIED

TOCCO COLLECTION



ENDLESS COLORS

FINISHES .XX

Pull

Stainless Steel



Satin
.44

Bright
.43

Stainless Steel Powder Coated Pull



White
.31

Champagne
.38

Bronze
.39

Grey
.32

Black
.40



TEXTURED

Grip

ECONYL®
REGENERATED NYLON



Black

Bronze

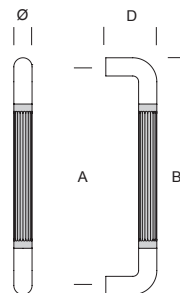
Grey

Red



On request
endless colors

Available all RAL colors (RAL is a color matching system which defines colors for paint - see link). Minimum quantity requested.



ITEM	A	B	Ø	D
TOC.273.0F25 .xx	250 mm 9 27/32"	270 mm 10 5/8"	20 mm 25/32"	65 mm 2 9/16"
TOC.231.0F30 .xx	300 mm 11 13/16"	325 mm 12 51/64"	25 mm 63/64"	70 mm 2 3/4"

MATERIALS

- Stainless Steel Pull
- ECONYL® Regenerated Nylon Grip

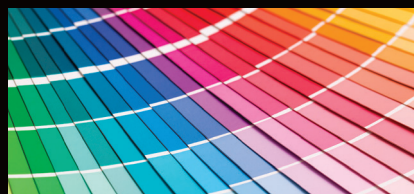
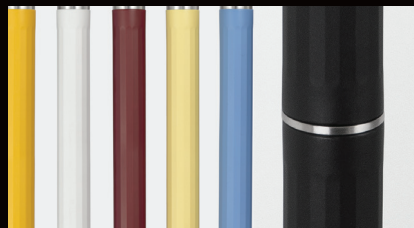
COLORS ON REQUEST TO MATCH ANY RAL #
(screws, grub screws and plastic parts not powder coated)
available on request depending on quantities

EDGE COMPONENT:
BLACK FOR DARK COLOUR POWDER
GREY FOR LIGHT COLOUR POWDER AND STAINLESS STEEL

LEED®

EPD®
THE INTERNATIONAL EPD® SYSTEM

ECD PLATFORM
EPD
VERIFIED



ENDLESS COLORS

FINISHES .XX

Pull

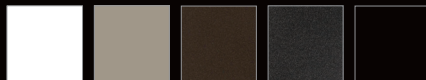
Stainless Steel



Satin
.44

Bright
.43

Stainless Steel Powder Coated Pull



White
.31

Champagne
.38

Bronze
.39

Grey
.32

Black
.40

TOCCO COLLECTION



TEXTURED

Grip

ECONYL®
REGENERATED NYLON



Black

Bronze

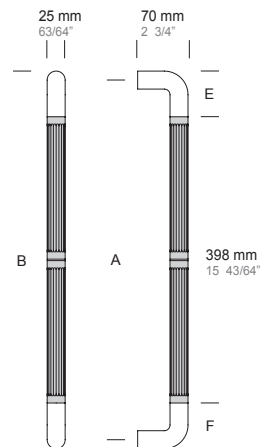
Grey

Red



On request
endless colors

Available all RAL colors (RAL is a color matching system which defines colors for paint - see link). Minimum quantity requested.



ITEM	A	B	E	F
TOC.231.0F50 .xx	500 mm 19 11/16"	525 mm 20 43/64"	63,50 mm 2 1/2"	63,50 mm 2 1/2"
TOC.231.999F .xx	custom	custom	custom	custom

A MAX 762 mm (30") - MIN 500 mm (19 11/16")

MATERIALS

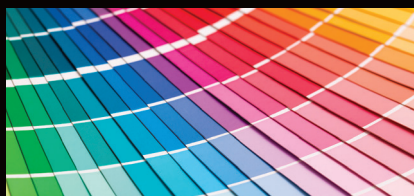
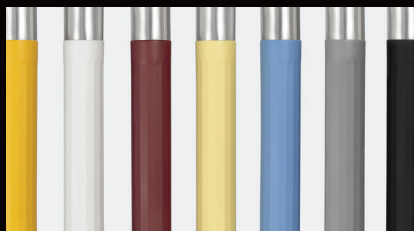
- Stainless Steel Pull
- ECONYL® Regenerated Nylon Grip

COLORS ON REQUEST TO MATCH ANY RAL #
(screws, grub screws and plastic parts not powder coated)
available on request depending on quantities

EDGE COMPONENT:
BLACK FOR DARK COLOUR POWDER
GREY FOR LIGHT COLOUR POWDER AND STAINLESS STEEL



TOCCO COLLECTION

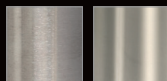


ENDLESS COLORS

FINISHES .XX

Pull

Stainless Steel



Satin .44 Bright .43

Stainless Steel Powder Coated Pull



White .31 Champagne .38 Bronze .39 Grey .32 Black .40



TEXTURED

Grip

ECONYL®
REGENERATED NYLON

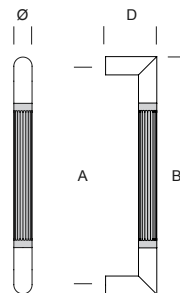


Black Bronze Grey Red



On request
endless colors

Available all RAL colors (RAL is a color matching system which defines colors for paint - see link). Minimum quantity requested.



ITEM	A	B	Ø	D
TOC.265.0F30 .xx	300 mm 11 13/16"	325 mm 12 51/64"	25 mm 63/64"	70 mm 2 3/4"

MATERIALS

- Stainless Steel Pull
- ECONYL® Regenerated Nylon Grip

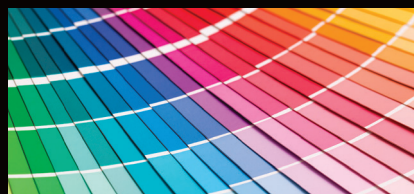
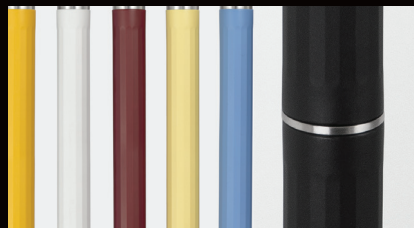
COLORS ON REQUEST TO MATCH ANY RAL #
(screws, grub screws and plastic parts not powder coated)
available on request depending on quantities

EDGE COMPONENT:
BLACK FOR DARK COLOUR POWDER
GREY FOR LIGHT COLOUR POWDER AND STAINLESS STEEL

LEED®

EPD®
THE INTERNATIONAL EPD® SYSTEM

ECD PLATFORM
EPD
VERIFIED

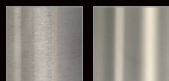


ENDLESS COLORS

FINISHES .XX

Pull

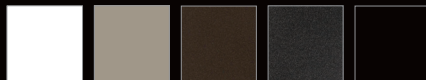
Stainless Steel



Satin
.44

Bright
.43

Stainless Steel Powder Coated Pull



White
.31

Champagne
.38

Bronze
.39

Grey
.32

Black
.40

TOCCO COLLECTION



TEXTURED

Grip

ECONYL®
REGENERATED NYLON



Black

Bronze

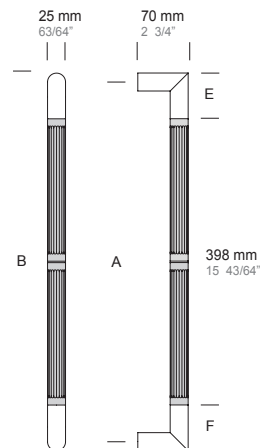
Grey

Red



On request
endless colors

Available all RAL colors (RAL is a color matching system which defines colors for paint - see link). Minimum quantity requested.



ITEM	A	B	E	F
TOC.265.0F50 .xx	500 mm 19 11/16"	525 mm 20 43/64"	63,50 mm 2 1/2"	63,50 mm 2 1/2"
TOC.265.999F .xx	custom	custom	custom	custom

A MAX 762 mm (30") - MIN 500 mm (19 11/16")

MATERIALS

- Stainless Steel Pull
- ECONYL® Regenerated Nylon Grip

COLORS ON REQUEST TO MATCH ANY RAL #
(screws, grub screws and plastic parts not powder coated)
available on request depending on quantities

EDGE COMPONENT:
BLACK FOR DARK COLOUR POWDER
GREY FOR LIGHT COLOUR POWDER AND STAINLESS STEEL

ENVIRONMENTAL PRODUCT DECLARATION (EPD)



The Collection features the [Environmental Product Declaration \(EPD\)](#). An EPD is an ISO Environmental Declaration based on ISO 14025 and ISO 21930 standards, transparently reporting the environmental performance of products or services from a lifecycle perspective. The preparation of an EPD encompasses various stages, from acquiring raw materials to the end of the product's life. EPDs adhere to international standards and consider the entire value chain. Additionally, the EPD is a third-party verified document. We are proud to offer the EPD for our products, available in the EPD Library.

PBA PRODUCTS CONTRIBUTE TOWARD SATISFYING PREREQUISITES AND CREDITS UNDER LEED

LEED® (Leadership in Energy Environmental Design) is a voluntary certification system for the management, design and construction of buildings that are sustainable from a social, environmental and economic point of view and in terms of the wellbeing of the users. Established in the United States in 1993 by the U.S. Green Building Council (USGBC), LEED is now the most widespread building sustainability certification standard in the world. It considers every field that involves the design and management of buildings or neighbourhoods, both commercial and residential new or undergoing requalification.

MAINTENANCE





GENERAL CONDITIONS OF SALE

1. AGREEMENT

1.1 The supply of the products shown in this pricelist ("Products") of PBA SPA ("PBA") shall be governed by these general conditions of sale ("General Conditions"). These General Conditions shall apply also to the sale of spare parts, when possible.

1.2 The sale agreement of the Products ("Agreement") is entered into force among the parties upon the Client's receipt of PBA's order confirmation.

These General Conditions shall be deemed as an integral and essential part of any Agreement.

1.3 These General Conditions shall be executed by the Client and at PBA's request by the first purchaser order sent to PBA, it being agreed that such party shall accordingly apply to any following Agreement.

1.4 These General Conditions shall be deemed as tacitly accepted by the Client for any supply of Products, unless expressly rejected in writing by the Client by means of notice thereof to be sent to PBA at the latest within 5 (five) days as of the date of receipt of PBA's confirmation of the first purchase order sent by the Client.

Should the Client expressly reject one or more of these General Conditions within the above term, PBA shall be free to withdraw from the relevant Agreement, by means of written communication thereof and without any further obligation.

1.5 In no event shall any general conditions of any nature, inserted and/or specified in the Client's order forms and/or in other documents sent to PBA by the Client, and/or of which the latter was made aware in any manner whatsoever, apply to any Agreement and/or to any supply of Products.

Any special term and/or condition of supply suggested by the Client shall apply to the Agreement only if expressly contained in PBA's order confirmation.

Any change and/or a amendment to these General Conditions shall be binding and valid only if accepted in writing by both parties.

2. PLACE AND TERMS OF DELIVERY OF THE PRODUCTS

2.1 The choice of an Incoterm does not affect the location of the place of delivery of the Products which, in any case, shall be deemed as delivered to the Client at the place and in the moment in which they are put at disposal of the haulier, for the relevant transport, at PBA's premises in Tezze sul Brenta (Vicenza), Italy.

In any case, unless otherwise agreed in writing by the parties, PBA shall never be liable for delays accrued during the transportation.

2.2 The terms of delivery of the Products (i) are specified in PBA's order confirmation, (ii) are approximate and roughly set forth and (iii) in no case shall they be construed as of essence.

2.3 In case of delay in the delivery of the Products at PBA's premises, caused by a fortuitous event, force majeure or other causes not depending on PBA's willful misconduct and/or gross negligence, the Client shall not be entitled to claim any compensation for damages, nor to ask for the termination of the Agreement and/or for the reduction of the price of the Products.

3. INCOTERMS

Unless otherwise agreed in writing, the Products and the relevant prices are to be considered with delivery Ex-works (EXW - Incoterms 2000), PBA's premises in Tezze sul Brenta (VI), Italy or at the different place indicated by PBA in the notice Products ready for delivery.

4. ORDERS - NON STANDARD AND/OR MADE TO MEASURE PRODUCTS

4.1 The purchase orders shall be made in writing and completed with all the data required for the relevant design and manufacture.

4.2 When already approved by the Client for the supply of catalogue Products, it is agreed that these General Conditions shall also apply to the sale orders related to non standard Products. Products out of catalogue and/or to be made to measure, if confirmed by PBA.

4.3 Any delay of the Client in the transmission of data, measures and/or technical specifications of the Products subject matter of the Agreement may cause a proportional postponement of the delivery terms, to be newly determined by PBA on the basis of its industrial needs.

5. PRICES AND PAYMENTS

5.1 The prices of the Products indicated in this pricelist are merely indicative and can be modified at any time by PBA.

5.2 The actual price of the Products is specified in PBA's order confirmation and, unless otherwise specified, it is deemed as net of VAT. Any change and/or modification of the Products, agreed by the parties at the transmission of PBA's order confirmation, shall cause the adjustment of the relevant price due to any increase of the costs of production and/or of the raw materials, as agreed from time to time by the parties.

5.3 The price of the Products shall be paid by the Client as per the terms and ways specified in PBA's order confirmation, or otherwise agreed by the parties.

Any late collection or non collection of the Products shall not cause an extension and/or postponement of the terms of payment.

5.4 PBA shall be entitled to suspend the delivery of the Products should: (a) the Client's assets and/or financial standings endanger the relevant payment; (b) the Client fail to timely pay Products previously supplied by PBA, also on the basis of other Agreements, until full payment of the outstanding credit and/or until receipt of proper guarantees of the Client for any delivery in progress, without prejudice to PBA's right to claim for any damages suffered as a consequence thereof.

5.5 In no event shall any vice and/or defect of the Products, even when expressly acknowledged as such by PBA, and/or any delay of payment to the agreed terms give the Client the right to suspend the relevant payments and/or any other payment for whichever reason due to PBA also under other contractual relationships.

5.6 In case of late payments, PBA shall be entitled to charge interests on the unpaid amount at the rate provided by the law.

5.7 In no case shall the Client be entitled to set off any amount due to PBA in force of any Agreement against any amount due by PBA at any time whatsoever.

6. RETENTION OF TITLE

PBA shall be the sole owner of the Products until the date of their full payment.

Should the Agreement be terminated due to the Client's breach of contract, any Client's advance payment shall be kept by PBA as an indemnity within the limits set forth by the law, without prejudice to the latter's right to claim for further damages.

7. WARRANTY

7.1 PBA guarantees that the Products will be free from vices and defects in materials and workmanship for a period of 24 (twenty-four) months as of the date of the relevant delivery ("Warranty Period").

7.2 Should the complaints raised by the Client within the Warranty Period with reference to the Products be grounded and accepted by PBA, the latter shall, at its exclusive discretion, repair and/or replace the defective Product/s or the defective component/s of the same, with delivery Ex-works (EXW Incoterms 2000) PBA's premises in Tezze sul Brenta (VI), Italy.

The warranty obligations herewith undertaken shall be effective and binding only provided that PBA has the opportunity to verify the vices and/or defects raised by the Client.

PBA's warranty obligation shall be deemed as entirely fulfilled with the removal of the vice and/or defect raised by the Client, or with the replacement of the defective Product and/or component, without any further obligations.

Unless otherwise agreed in writing by the parties, all the expenses for returning to PBA the defective Products and/or components, as well as all the additional expenses related to the operations of repair or replacement shall be borne by the Client and shall be at the Client's risk.

7.3 Subject to the loss of warranty, the Client shall notify in writing, by registered letter return receipt requested, any vices and/or defects found within and not later than 8 (eight) days as of the date of the actual delivery of the Products, or, in case of hidden vices or defects, within and not later than 8 (eight) days as of the date of the relevant discovery.

7.4 The Warranty is expressly excluded for vices and/or defects of the Products arising from or consisting in:

- (i) any repair, alteration and/or modification not authorized in writing by PBA;
- (ii) normal wear and tear of the materials or of single components;
- (iii) improper use and/or application of the Products;
- (iv) defects and/or mistakes in the measures and/or technical specifications supplied by the Client;
- (v) deposit, maintenance and/or cleaning not in compliance with PBA's instructions;
- (vi) installation not in compliance with PBA's instructions and/or carried out with non suitable materials;
- (vii) any other event for which PBA is not directly liable.

Should the Client fail to regularly pay the agreed price, even if such default or such delay concerns a single part of the aggregate price of the Products, the warranty shall not apply.

7.5 Without prejudice to the compulsory product's liability law and any liability for willful misconduct and/or gross negligence, PBA shall not be liable for direct, indirect or incidental damages caused to the Client and/or to third parties as a consequence of the defects of the Products. The Client shall not be entitled to terminate the Agreement in case of vices and/or defects of the Products subject matter of this warranty, should PBA timely comply with the relevant obligations.

7.6 The Products made of wood, pvc, rubber, rolled sections and/or of other natural materials shall be of a quality equal, within the limits of a reasonable similarity, to the relevant samples examined by the Client before the execution of the Agreement.

In no case shall therefore the samples of the Products examined by the Client be qualified as the exclusive standard for the exterior appearance of the Products.

Without prejudice to the warranty regulated by this clause 7, any chromatic and/or aesthetic difference (nervation of the wood, intensity of the colour shades, etc.) of the delivered Products compared to the characteristics of the relevant samples examined by the Client, shall not entitle the latter to terminate the Agreement and/or to ask for the replacement of the Products or for the reduction of the price.

7.7 In no event shall the chromatic differences between Products of the same type and/or colour, delivered with different lots and/or in different moments, be qualified as vices and/or defects of the Products, nor shall the Client be entitled to claim their replacement and/or the reduction of the relevant price as a consequence thereof.

8. MISPRINTS AND PRINTING ERRORS

We are not responsible for any misprint or printing error in catalogs or price lists. All images and sizes are not binding. Modifications are reserved. Design modifications are reserved to technically enhance products

9. EXCLUSIVE COURT

All disputes arising out of or relating to these General Conditions, any Agreement and/or to the supply of Products shall be exclusively submitted to and settled by the Court of Vicenza, Italy. PBA shall in any case be entitled, at its exclusive discretion, to institute legal proceedings against the Client before the Court of the place where the Client has its registered office.

10. APPLICABLE LAW

These General Conditions of sale and any Agreement shall be governed by Italian Law.

Should the Client be a foreign entity or in any case an entity having the registered office or the main place of business abroad, the Contracts related to the supply of the Products shall in any case be regulated by the United Nations Convention on the International Sale of Goods (Wien Convention), April 11, 1980)

11. WAIVER

Failure by PBA to enforce at any time the provisions of these General Conditions shall not be construed as a waiver of such provision or of the right to thereafter enforce each and every provision hereon.

12. LANGUAGE

The Client executes these General Conditions in Italian and in English, it being agreed that should any conflict or inconsistency arise among the two versions, the Italian wording shall always prevail.

pba S.p.A.

T +39 0424 5451 info@pba.it www.pba.it

pba USA, Inc.

T +1 212 255 4605 salesusa@pba-usa.us www.pba.it

pba S.p.A. Deutschland

T +49 2151 820060 info@de.pba.it www.pba.it