

dba

WE ARE THE ONES WHO OPEN DOORS

OF UNIVERSITIES, STORES, HOSPITALS, AND BUILDINGS, THAT SHIFTED FROM PLACES TO ICONS. WE ARE THE ONES WHO “EVEN A PULL TELLS WHO WE ARE, SO LET’S DO IT EVEN BETTER”; THOSE WHO “SUSTAINABILITY IS CONSISTENCY UNVEILING IN THE LONG TERM, SO LET’S PAY ATTENTION NOW”. WE ARE THE ONES WHO TEAM UP WITH THE BEST PARTNERS, AND THOSE WHERE WOMEN ARE LEADERS. WE ARE THE ONES WHO EMBELLISH THE FUNCTION OF A GRAB BAR IN A BATHROOM, OF A DRAWER PULL. STRONG AS STEEL, CONSTANTLY-CHANGING AS COPPER. WE ARE THE ONES WHO LET YOU IN AND OUT, GO, STAY AND COME BACK. WE ARE THE ONES WHO NEVER MAKE JUST FOR THE SAKE OF MAKING, BUT ALWAYS MOVED BY THE AMBITION OF CREATING “GOOD” OBJECTS FOR ALL.

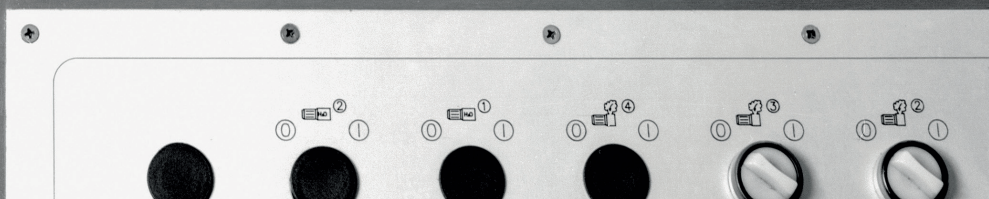
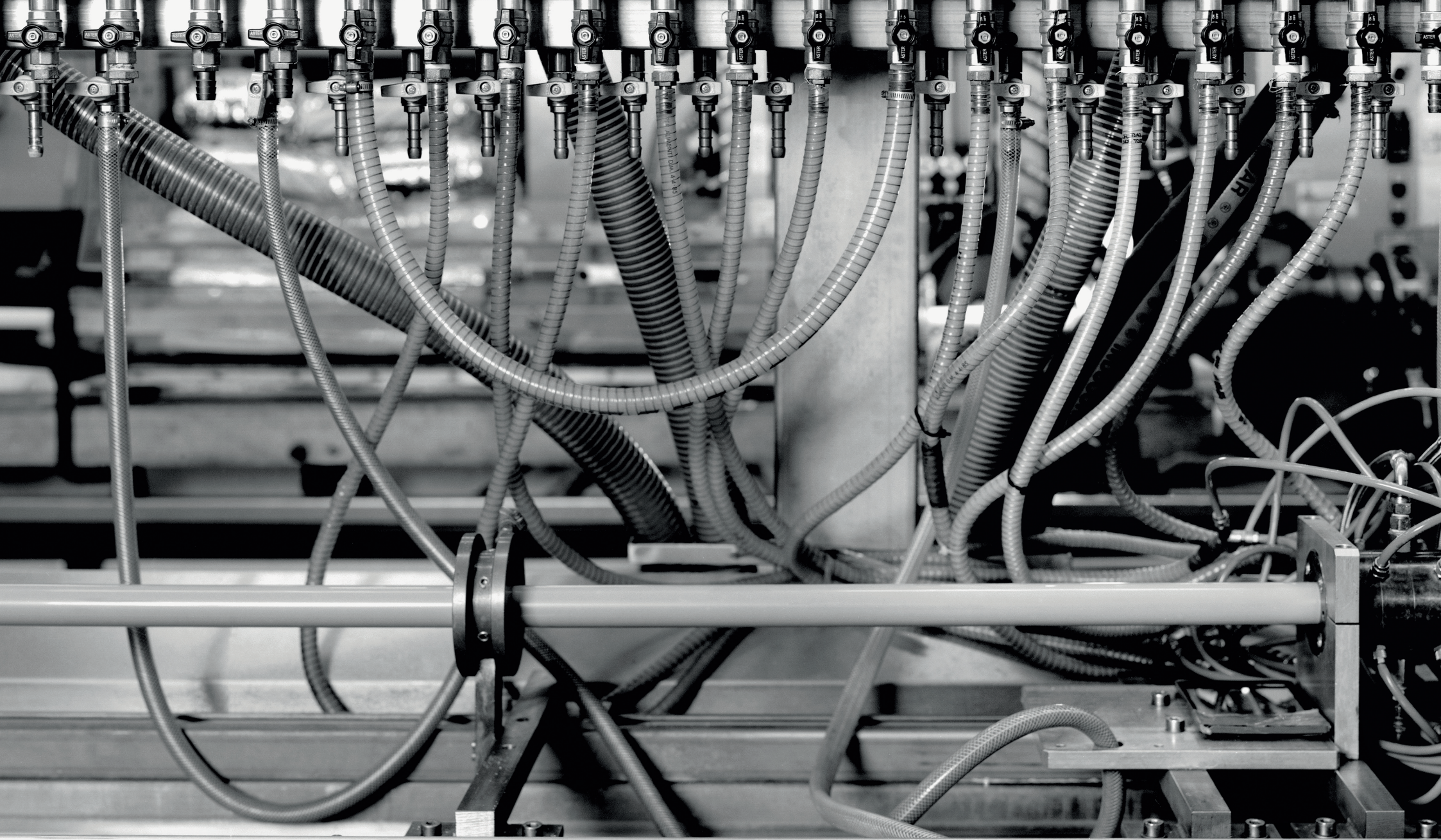


Photo Gabriele Basilio

INCLUSION

OUR CHALLENGE IS TO CREATE SOLUTIONS ACCESSIBLE TO ALL. INCLUSIVENESS IS FOR EVERYONE, IT DOES NOT IDENTIFY A SPECIFIC SKILL, IT DOES NOT SEEK SOLUTIONS THAT FLATTEN NEEDS IN A VISION OF "COMMON NECESSITY", ON THE CONTRARY IT VALUES THE BEAUTY, THE VARIETY AND THE UNIQUENESS OF PEOPLE. ONLY UNIVERSAL VALUES CAN LAY THE FOUNDATION OF SUCH AN AMBITIOUS BUILDING: INCLUSIVENESS, BEAUTY FOR ALL, RESPONSIBILITY FOR THE CHOICES MADE ON WHAT, WITH WHOM AND HOW, AND SUSTAINABILITY. BECAUSE WE CANNOT AVOID TO BE SUSTAINABLE IF WE TRULY BELIEVE IN THE "FOR ALL".



Photo Gabriele Basilico

EPD

OUR CONTRIBUTION TO THE PROTECTION OF THE ECOSYSTEM. AN ENVIRONMENTAL PRODUCT DECLARATION (EPD) IS AN ISO TYPE III ENVIRONMENTAL DECLARATION BASED ON ISO 14025 STANDARD. AN EPD TRANSPARENTLY REPORTS THE ENVIRONMENTAL PERFORMANCE OF PRODUCTS OR SERVICES FROM A LIFECYCLE PERSPECTIVE. THE PREPARATION OF AN EPD INCLUDES DIFFERENT STAGES, FROM ACQUIRING RAW MATERIALS TO THE END OF LIFE OF THE FINAL PRODUCT. EPDS ARE BASED ON INTERNATIONAL STANDARDS AND CONSIDER THE ENTIRE VALUE CHAIN. ADDITIONALLY, EPD IS A THIRD-PARTY VERIFIED DOCUMENT. pba HAS OBTAINED THE EPD VALIDATION AND REGISTRATION FROM THE INTERNATIONAL EPD SYSTEM.

LEED

OUR CONTRIBUTION TO THE EFFICIENCY AND SUSTAINABILITY OF BUILDINGS. LEED (LEADERSHIP IN ENERGY ENVIRONMENTAL DESIGN) IS A VOLUNTARY CERTIFICATION SYSTEM FOR THE MANAGEMENT, DESIGN AND CONSTRUCTION OF BUILDINGS THAT ARE SUSTAINABLE FROM A SOCIAL, ENVIRONMENTAL AND ECONOMIC POINT OF VIEW AND IN TERMS OF THE WELLBEING OF THE USERS. pba PRODUCTS CONTRIBUTE TOWARD SATISFYING PREREQUISITES AND CREDITS UNDER LEED.

DECLARE LABEL

OUR DECLARE “RED LIST FREE” PRODUCTS FOR SUSTAINABLE BUILDINGS. THE DECLARE LABEL LISTS THE MATERIALS IN A PRODUCT TO DISCLOSE WHAT THEY ARE MADE OF, WHERE THEY ARE PRODUCED AND HOW THEY WILL BE DISPOSED OF. THIS LABEL IS A CALL FOR RESPONSIBILITY TO PRODUCERS AND USERS ALIKE. THE DECLARE LABEL IS A GUIDE TO SELECT PRODUCTS, PROVIDES INFORMATION IN A SIMPLE AND TRANSPARENT WAY AND RISES ABOVE GREENWASHING. DECLARE TAKES COMPLEX CHEMICAL ANALYSIS AND RAW MATERIAL SOURCE LOCATION INFORMATION TO ESTABLISH THAT PRODUCTS ARE FREE FROM HAZARDOUS CHEMICALS. ALL DECLARE LABEL OF pba PRODUCTS ARE RED LIST FREE.



Photo Gabriele Basilico



PULLS



LEVERS
& LOCKS



LOCKING
LADDER PULLS



TOCCO COLLECTION
SENSORY SENSITIVE
HARDWARE



SINGLE-MOTION
SAFE EGRESS PULL



OH
COLLECTION



LOCKSETS FOR
GLASS DOOR



BATHROOM AND
HEALTHCARE
ACCESSORIES



HANDS-FREE PULLS
AND INTEGRATED
DOOR PULLS



DESIGN
FOR ALL



CABINET & MILLWORK
HARDWARE



HANDRAIL



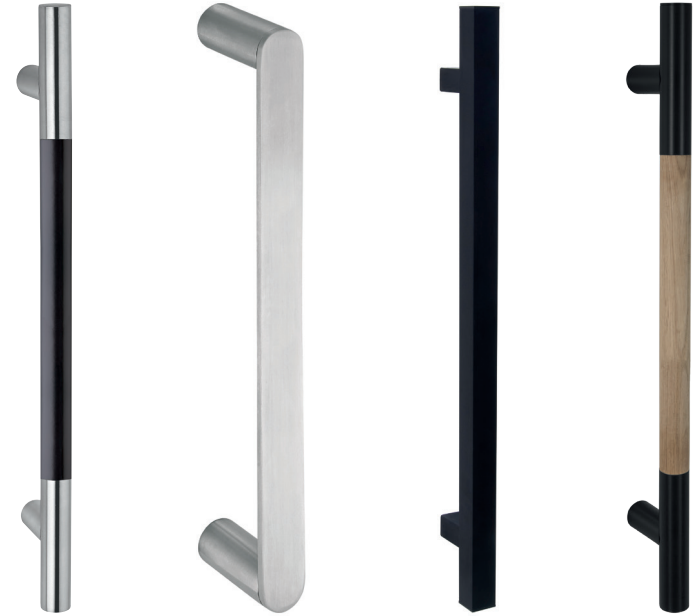
DOOR HARDWARE

PULLS

Magda Biernat, All Rights Reserved



Vera Wang San Francisco US



Vera Wang
Rolex
Avon
Mercedes Benz
Giorgio Armani
Gucci Group
Missoni
Les Carmes Haut
Pepsi

San Francisco
Geneve
New York
Roma
Hong Kong
Novara
Paris
Brion
Purchase

LOCKING LADDER PULLS



Law Firm Headquarters, San Francisco US



Sony Headquarters
McLaren Technology Centre
Pirelli Headquarter
Square Space
Heidelberg Technology Park
BNL
Royal Bank Of Scotland
Cantine Antinori
Gensler Office

New York
Woking
Milano
New York
Heidelberg
Roma
Los Angeles
Firenze
Abu Dhabi

SINGLE-MOTION SAFE EGRESS PULL

ADA



Campus EDF Saclay France

Campus EDF
The New School University Center
Yacht Club de Monaco Marina
Pflegeheim Forum der Senioren
CAA Creative Artists Agency
Campus Kiel
Klinikum Berlin-Buch
Ben Gurion Airport
Haus Augarten

Saclay
New York
Montecarlo
Viernheim
New York
Lübeck
Berlin
Tel Aviv
Wien



LEVERS



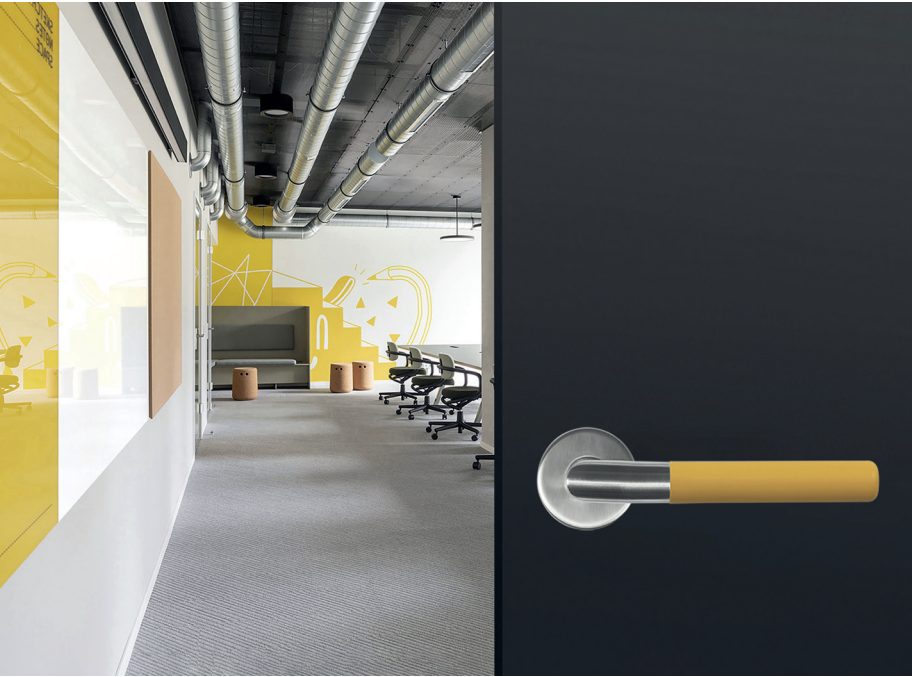
Fondazione Prada Milano Italy



Fondazione Prada
The Spiral
Aéroport Charles De Gaulle
Torre Isozaki
Lega Del Filo d'Oro
Auditorio De Tenerife
Google St. John's Terminal
Expo 2015
Reggia di Venaria Reale

Milano
New York
Paris
Milano
Osimo
Tenerife
New York
Milano
Torino

TOCCO COLLECTION | SENSORY SENSITIVE HARDWARE



Conference Room Chicago US



Disney Government Affairs
LEGO Group Boston Hub
Paramount
Moncler Headquarters
HOK Office
Snam Headquarters
Tik Tok
Disneyland Paris
Apple

Washington
Boston
New York
Milano
Chicago
Milano
Chicago
Paris
New York

OH COLLECTION



Office Paris France



Morgan Stanley
Aquarian Holdings
JPMorganChase
South Station Tower
GHK Capital Partners
Diversified Communications
Place du Portage III
AstraZeneca's research site
Disney NYC Headquarters

Paris
New York
Los Angeles
Boston
Greenwich
Portland
Gatineau
Cambridge
New York

LOCKSET FOR GLASS DOOR



SQ Space Headquarters New York US



SQ Space Headquarters

Hart Showroom

U-Bora Towers

Haworth Showroom

The Village

Gemological Institute Of America

Cartier

PTC

Rothschild

New York

Houston

Dubai

New York

Lyon

New York

Madrid

Boston

New York

HANDS-FREE PULLS

ADA



SPA Center Los Angeles US



- | | |
|--|-----------------|
| La Hacienda Alcaidesa Links Golf Resort | Cádiz |
| City of Dreams Mediterranean | Limassol |
| Radisson Blu Hotel | Durban Umhlanga |
| Hotel Hyatt Regency | Saint Julian |
| Hotel Sheraton Orano | Orano |
| Illy Café | Milano |
| The Residences Mandarin Oriental Mayfair | London |
| Hotel Palazzo Tirso | Cagliari |
| Bulgari Hotel | Roma |

INTEGRATED DOOR PULLS



Medical Center Roma Italy



Universitätsklinikum Wuppertal
Torre Galfa
Hewlett Packard European Headquarter
Nuovo Campus Bologna Business School
4A's
Autogrill
Auditorium and Congress Center
Carl Friedrich Flemming Klinik
CityLife

Wuppertal
Milano
Dublin
Bologna
New York
Milano
Roma
Schwerin
Milano



MILLWORK PULLS

CABINET & MILLWORK HARDWARE

ADA

Photo: Morning Consult



Morning Consult Headquarters New York US



- Morning Consult Headquarters
- Tik Tok
- Baker Botts
- Arapiles 13
- Black Office
- San Pellegrino Flagship Factory
- Walker & Dunlop Headquarters
- Estee Lauder
- Stream Building
- New York
- Los Angeles
- Dallas
- Madrid
- Clichy
- San Pellegrino Terme
- Bethesda
- New York
- Paris



BATHROOM DESIGN FOR ALL

GRAB BARS

ADA



Ospedale Dell'Angelo Mestre Italy



Ospedale Dell'Angelo
National University Hospital
Springdale Green
Ospedale Civile Maggiore
Centre Hospitalier De Roubaix
Ospedale San Bartolomeo
Sunnybrook Hospital
Apple Park Amenity Building
Ospedale Di Padova

Mestre
Singapore
Austin
Verona
Roubaix
Trento
Toronto
Cupertino
Padova

SEATS

ADA



Luxury Hotel Firenze Italy



Hotel Port Palace
Hotel Mandarin Oriental
Bankwell
Hotel Norman
Salvation Army
Conservatorium Hotel
Hotel Montemartini
Hotel Missoni
Hotel Le Meridien

Montecarlo
Milano
Hamdem
Tel Aviv
San Francisco
Amsterdam
Roma
Edimburg
Barcelona

ACCESSORIES



Private Rest Home Roma Italy



Ospedale Niguarda
Hotel Le Sereno
HIS new tech
Scuola Gabelli
Klinikum Stuttgart
Hotel Maitò
Ospedale Don Calabria
Ospedale San Bortolo
Hospital Nyt OUH

Milano
Como
Brussels
Belluno
Stuttgart
Forte Dei Marmi
Negrar
Vicenza
Odense



CAP | FOLDING BATHROOM ACCESSORIES

CAP | FOLDING BATHROOM ACCESSORIES



Private Clinic Venezia Italy



Osservatorio Fondazione Prada
Louis Vuitton Boutique
Kempinski Hotel San Lawrenz
Arena di Verona
Rosewood Residences
Ca' Apollonio Heritage
Borgo dei Conti Resort
Shura Golf Clubhouse and Villas
CityWave

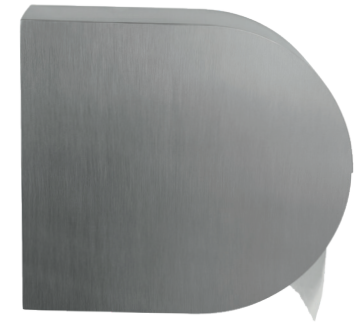
Milano
London
Gozo
Verona
Shura Island
Vicenza
Perugia
Shura Island
Milano



BATHROOM ACCESSORIES AND HANDRAIL



VIP Lounge Private Company Los Angeles US



The Museum of Modern Art MoMA
Centre Aquatique de Carvin
Grande Arche, La Défense
Morgan Stanley
AIG Nationa Hall
Cittadella della Salute
Hav Centre Socioculturel et Sportif Danton
Blue Owl Capital
Larvotto Regeneration Project

New York
Carvin
Paris
New York
Westport
Pordenone
Le Havre
New York
Monaco

HANDRAIL



MAXXI Roma Italy



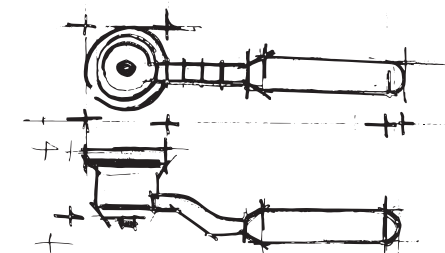
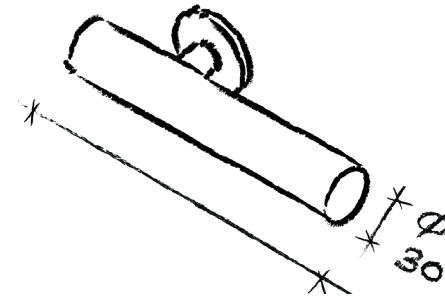
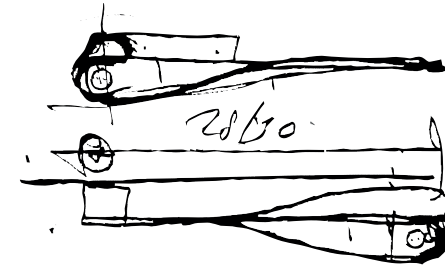
Nuovo campus Architettura Politecnico	Milano
ADP Aéroports de Paris	Paris
Helios Amper-Klinikum	Dachau
IULM	Dubai
LinkedIn Headquarter	Milano
PGA Golf Hilton Hotel	Madrid
Hotel Ritz-Carlton Los Cabos	San José del Cabo
MAXXI	Roma
Solar Carve, Aquarian Holdings & RTW	New York

Crédit photo JP Porcher



Les Dunes Paris France

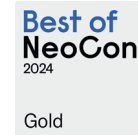
pba collaborates with the major architectural firms with a global presence to design new products with the goal to both expand the hardware and bathware offer, and to open new business with innovative products that integrate technical solutions with aesthetical and functional solutions.



AWARDS



THE PLAN AWARDS
HONORABLE MENTION



BEST OF NEOCON GOLD AWARD
WINNER



AN's BEST OF PRODUCTS AWARDS
WINNER



BEST OF NEOCON INNOVATION AWARD
WINNER



AN's BEST OF PRODUCTS AWARDS
WINNER



NYCXDESIGN AWARDS
HONOREE



AN's BEST OF PRODUCTS AWARDS
HONORABLE MENTION



NYCXDESIGN AWARDS
FINALIST



GREEN GOOD DESIGN
SUSTAINABILITY AWARDS
WINNER



EUROPEAN PRODUCT DESIGN AWARD
WINNER



EUROPEAN PRODUCT DESIGN AWARD
HONORABLE MENTION



IDEA INTERNATIONAL DESIGN
EXCELLENCE AWARDS
FINALIST



GLOBAL FUTURE DESIGN AWARDS
WINNER



V ADI CERAMICS & BATHROOM
DESIGN AWARD
SPECIAL MENTION



NYCXDESIGN AWARDS
FINALIST



XXIII COMPASSO D'ORO AWARD
NOMINATION



#METROPOLISLIKES NYCXDESIGN
WINNER



reddot design award

REDDOT DESIGN AWARD
WINNER



GLOBAL FUTURE DESIGN AWARDS
THIRD AWARD



XXI COMPASSO D'ORO AWARD
NOMINATION

MATERIALS, FINISHING AND DETAILS

STAINLESS STEEL

PBA IS THE PREMIER BRAND OF AISI 316L STAINLESS STEEL, THE HARDEST, MOST RESISTANT AND ELASTIC STEEL. THE STAINLESS STEEL AISI 316L IS AN AUSTENITIC ALLOY. IT IS DISTINGUISHED FROM OTHERS INOXIDIZABLE STEELS BY THE HIGH PERCENTAGE OF MOLYBDENUM WHICH GIVES IT A SPECIAL RESISTANCE: TO PITTING CORROSION AND STRESS CORROSION. IN THIS KIND STAINLESS STEEL THE NICKEL'S PRESENCE IS INCREASED IN ORDER TO GUARANTEE STABILITY. FURTHER, THE "L" STAYS FOR LOW CARBON AND IN FACT THE QUANTITY IS LESS OR EQUAL TO 0,03%.



ALUMINIUM

THE EN-AW 6060 ALUMINUM ALLOY IS WIDELY USED DUE TO ITS HIGH THERMAL DEFORMATION CAPACITY, EXTRUSION SPEED AND THE POSSIBILITY OF OBTAINING AN EXCELLENT LEVEL OF AESTHETIC FINISH, ESPECIALLY THROUGH THE ANODIZATION PROCESS. IT ALSO HAS AN EXCELLENT CORROSION RESISTANCE, EXCELLENT WELDABILITY AND GOOD COLD FORMABILITY, ALL ASPECTS THAT MAKE IT THE IDEAL MATERIAL FOR THE CREATION OF COMPLEX SHAPES AND DESIGN OBJECTS.



NYLON POLIAMIDE 6

THERMOPLASTIC RESIN (POLYAMIDE 6). HIGH MECHANICAL RESISTANCE. TENACITY. RESISTANCE TO WEAR AND ABRASION. ANTISTATIC, WITH GOOD INSULATING POWER AND GOOD RESISTANCE TO CREEPING CURRENTS. GOOD STABILITY TO CHEMICAL AGENTS SUCH AS HYDROCARBONS, OILS AND FATS; GOOD RESISTANCE TO NUMEROUS CHEMICAL AGENTS SUCH AS SOLVENTS, DETERGENTS AND DISINFECTANTS. POOR THERMAL CONDUCTION. CLASSIFIED AS SELF-EXTINGUISHABLE INTO CATEGORY UL 94V-2. IT DOES NOT GENERATE TOXIC GASES. PHYSIOLOGICALLY INNOCUOUS. COMPLIANCE WITH THE REQUIREMENTS OF DIRECTIVE 2011/65/EU. IT IS ALSO FREE OF LEAD (PB), MERCURY (HG), HEXAVALENT CHROMIUM (CR+6), POLYBROMINATED BIPHENYLS (PBB), POLYBROMINATED DIPHENYL ETHERS (PBDE) AND CADMIUM (CD).



LEATHER

GENUINE LEATHER IS AN EXTREMELY DURABLE MATERIAL OFFERING HIGH ELASTICITY, SOFTNESS AND LIGHTNESS. THIS FINE, NATURAL MATERIAL MAY DISPLAY MARKS AND VARIATIONS SUCH AS LINES AND WRINKLES, AND COLOR DIFFERENCES, ALL SIGNATURES THAT ENHANCE ITS BEAUTY AND EXCELLENCE.



WOOD

WOOD IS A NATURAL LIGHTWEIGHT AND DURABLE FIBER; IT IS A GOOD INSULATING MATERIAL THAT RETAINS MOISTURE. THE MAIN PHYSICAL PROPERTIES OF WOOD ARE DURABILITY, HARDNESS, STIFFNESS AND DENSITY. PURE WOOD IS A REFINED AND NATURAL PRODUCT TOTALLY REGENERABLE AND RECYCLABLE. MARKS, GRAINS AND COLOR VARIATIONS ARE DISTINCTIVE FEATURES THAT GUARANTEE ITS AUTHENTICITY.



ECONYL® REGENERATED NYLON

ECONYL® IS A 100% REGENERATED NYLON FROM WASTE SUCH AS FISHING NETS, OLD CARPETS DESTINED FOR LANDFILLS, PLASTIC COMPONENTS AND FABRIC SCRAPS FROM MILLS. AS WELL AS BEING A SOLUTION ON WASTE, ECONYL® REGENERATED NYLON IS ALSO BETTER WHEN IT COMES TO CLIMATE CHANGE. IT REDUCES THE GLOBAL WARMING IMPACT OF NYLON BY UP TO 90% COMPARED WITH THE MATERIAL FROM OIL.



pba S.p.A. T +39 0424 5451 info@pba.it www.pba.it

pba USA, Inc. T +1 212 255 4605 salesusa@pba-usa.us www.pba.it

pba S.p.A. Deutschland T +49 2151 820060 info@de.pba.it www.pba.it